



Université Catholique de Lille

USEFUL INFORMATION



Southern Studies Forum

21-23 September 2017, Lille Catholic University, France

Accommodation Recommendations

COSY'S APPART HOTEL (the nearest)

★★★

69/71 Boulevard Vauban – 59000 Lille – France

- ☎ **Tel:** +33 (0)3 28 82 24 24
- 📠 **Fax:** +33 (0)3 20 74 42 81
- ✉ **E-Mail:** reservation-lille@cosys-residences.com
- 🌐 **Website:** www.cosys-residences.com
- 🏠 **Room:** 46 rooms, from 55 € to 130 € per night



Adagio Aparthotel

(3 mins from campus)

17 rue de Colson
59800 LILLE

Tel(+33)3/20154343
Fax(+33)3/20154301
H8411@adagio-city.com
Code Aparthotel: 8411

From 51 € to 120 € per night



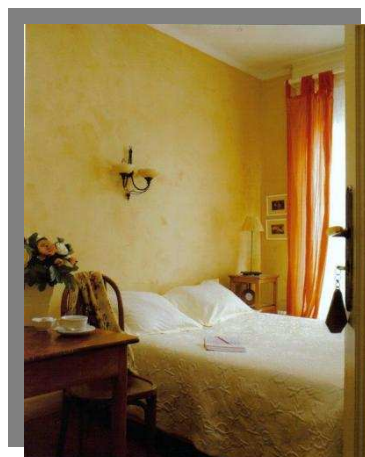
HOTEL BRUEGHEL

★★ (town centre)

3/5 Parvis Saint-Maurice – 59800 Lille – France

- ☎ **Tel:** +33 (0)3 20 06 06 69
- 📠 **Fax:** +33 (0)3 20 63 25 27
- ✉ **E-Mail:** hotel.brueghel@nordnet.fr
- 🌐 **Website:** www.hotel-brueghel.com
- 🏠 **Room:** 65 rooms, from 80 € to 130 €
- 🍳 **Extras:** Breakfast (8,50 €/day/person)
NO PARKING

*Underground: Line 1/2 - stop "Lille-Flandres"
(a 20-minute walk to Lille Catholic University)*





Ibis Budget Lille Centre

(town centre)

10 Rue de Courtrai,
59000 Lille,

From 36€ per night

http://www.tripadvisor.co.uk/Hotel_Review-g187178-d300759-Reviews-Ibis_Budget_Lille_Centre-Lille_Nord_Nord_Pas_de_Calais.html

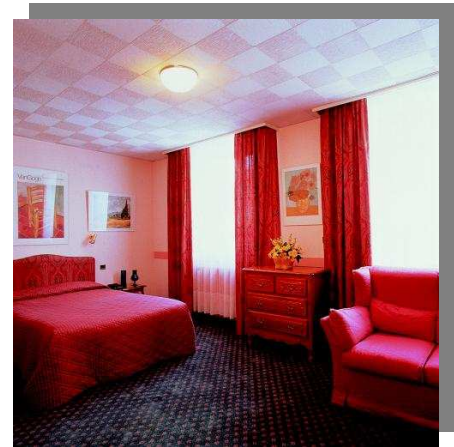
HOTEL DE LA PAIX

★★ (town centre)

46 bis, rue de Paris – 59800 Lille – France

- 📞 **Tel:** +33 (0)3 20 54 63 93
- 📠 **Fax:** +33 (0)3 20 63 98 97
- ✉ **E-Mail:** hotelpaixlille@aol.com
- 💻 **Website:** www.hotel-la-paix.com
- 🏠 **Room:** 36 rooms, from 82 € to 102/night
- 🍳 **Extras:** Breakfast (9 €/day/person)

*Underground : Line 1/2 - stop "Lille-Flandres"
(a 25-minute walk to Lille Catholic University)*



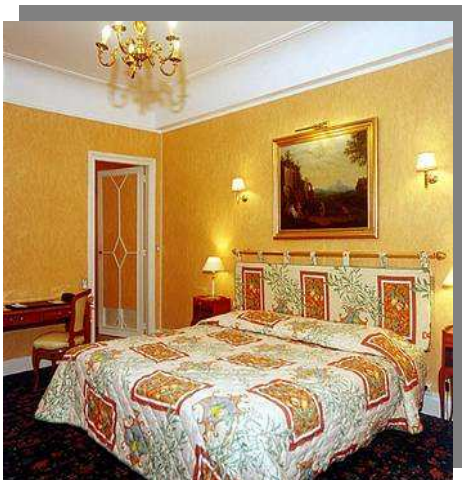
GRAND HOTEL BELLEVUE (town centre)

★★★

5 rue Jean Roisin – 59000 Lille – France

- 📞 **Tel:** +33 (0)3 20 57 45 64
- 📠 **Fax:** + 33 (0)3 20 40 07 93
- ✉ **E-Mail:** reservation@grandhotelbellevue.com
- 💻 **Website:** www.grandhotelbellevue.com
- 🏠 **Room:** 60 rooms, from 110 € to 145 € /night
- 🍳 **Extras:** Breakfast (13 €/day)
 - Grand Place parking (14 €/day)
 - Nouveau Siècle parking (10 €/day)

*Underground : Line 1- stop "Rihour"
(a 25-minute walk to Lille Catholic University)*





Best Hotel (Lille centre)
66, Rue Littré - 59000 LILLE, France
Tél. +33 (0) 3 20 54 00 02

Email : lille@besthotel.fr

Next to Gambetta metro station, 10 minutes walk from campus.

TRANSPORT

TRANSFER OPTIONS

Lille has 2 train stations situated 400 metres from each other: “Lille Europe” and “Lille Flandres”. They have metro and bus stations.

AIRPORT SHUTTLE

Lille Lesquin airport – Lille Flandres train station

(Bus, underground and tram connection in 20 minutes).
The shuttle is in front of the Euralille shopping centre or the Lille-Lesquin airport exit.

For any further information:

www.lille.aeroport.fr/acces/navette.asp



Paris Roissy Charles de Gaulle and Brussels airports have train stations on the spot:

→ **From Paris Roissy Charles de Gaulle airport:** take a TGV (High Speed train) to Lille Europe station.
A single ticket costs around 30 € depending on the day

You can check the train timetables on the website: www.sncf.fr

For more information: Charles de Gaulle airport website: www.adp.fr

→ **From Brussels airport** to Lille Europe station: take a regional train (City-Airport-Express) to Brussels Midi train station. From Brussels-Midi station, take the Eurostar train or a TGV to Lille Europe station (around 33 minutes). **A single ticket costs around 30 €**

For more information: www.brusselsairport.be

→ **From Charleroi airport:** take the shuttle bus to Brussels Midi train station (around 1 hour. **A single ticket costs 20 €**). Then, take the Eurostar or a TGV to Lille Europe station.

For more information: www.charleroi-airport.com/en/passengers/acces-and-parking/shuttlesbrussels/index.html

→ **From Beauvais airport:** go to Paris Nord train station and then take a train to Lille Europe or Lille Flandres train station. **Single ticket from 30 €** (according to the date you take your ticket).

For more information: www.aeroportbeauvais.com

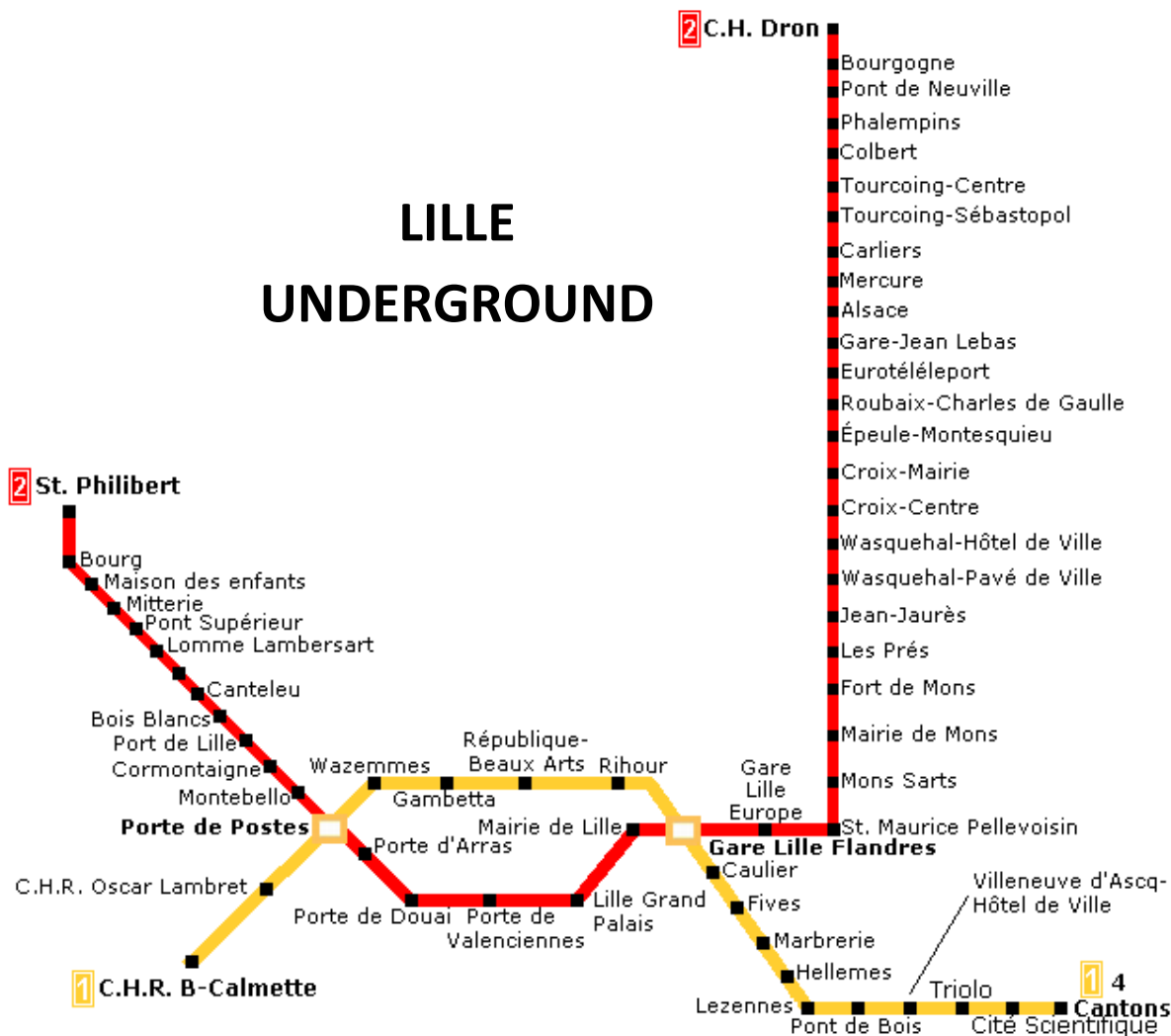
BUS & METRO

When you arrive at Lille Europe or Lille Flandres train stations, either take the underground Line 2: direction Saint Philibert → Cormontaigne and walk for 10 minutes towards “Boulevard Vauban”.

It is also possible to take Line 1 to Gambetta and walk for ten minutes.

Or take the bus line 12 : stop “Université Catholique”

LILLE UNDERGROUND



TAXIS

Taxi Rihour: Tel: +33 (0)3 20 55 20 56
Taxi Union: Tel: +33 (0)3 20 06 06 06
Taxi Gare Lille: Tel: +33 (0)3 20 06 64 00

You will find some companies at the exit of airports and Lille centre.

➤ The price from the two Lille train stations is about 10-15 €.

RENTING CARS

	PRACTICAL INFORMATION	PRICE [per day]
EUROPCAR	Tel: +33 (0)3 20 90 45 45 – www.europcar.fr	From 40 €
NATIONAL CITER	Tel: +33 (0)3 20 87 58 03 – www.citer.fr	From 40 €
FRANCECARS LILLE CENTRE	114 rue du Molinel – Lille Tel: +33 (0)3 20 57 58 99 – www.francecars.fr	From 50 €
UCAR	34 boulevard Jean Baptiste Lebas Tel: +33 (0)3 20 52 50 00 – www.ucar.fr	From 50 €